

City of Plano

Department of Emergency Management



Why do we have Emergency Management?

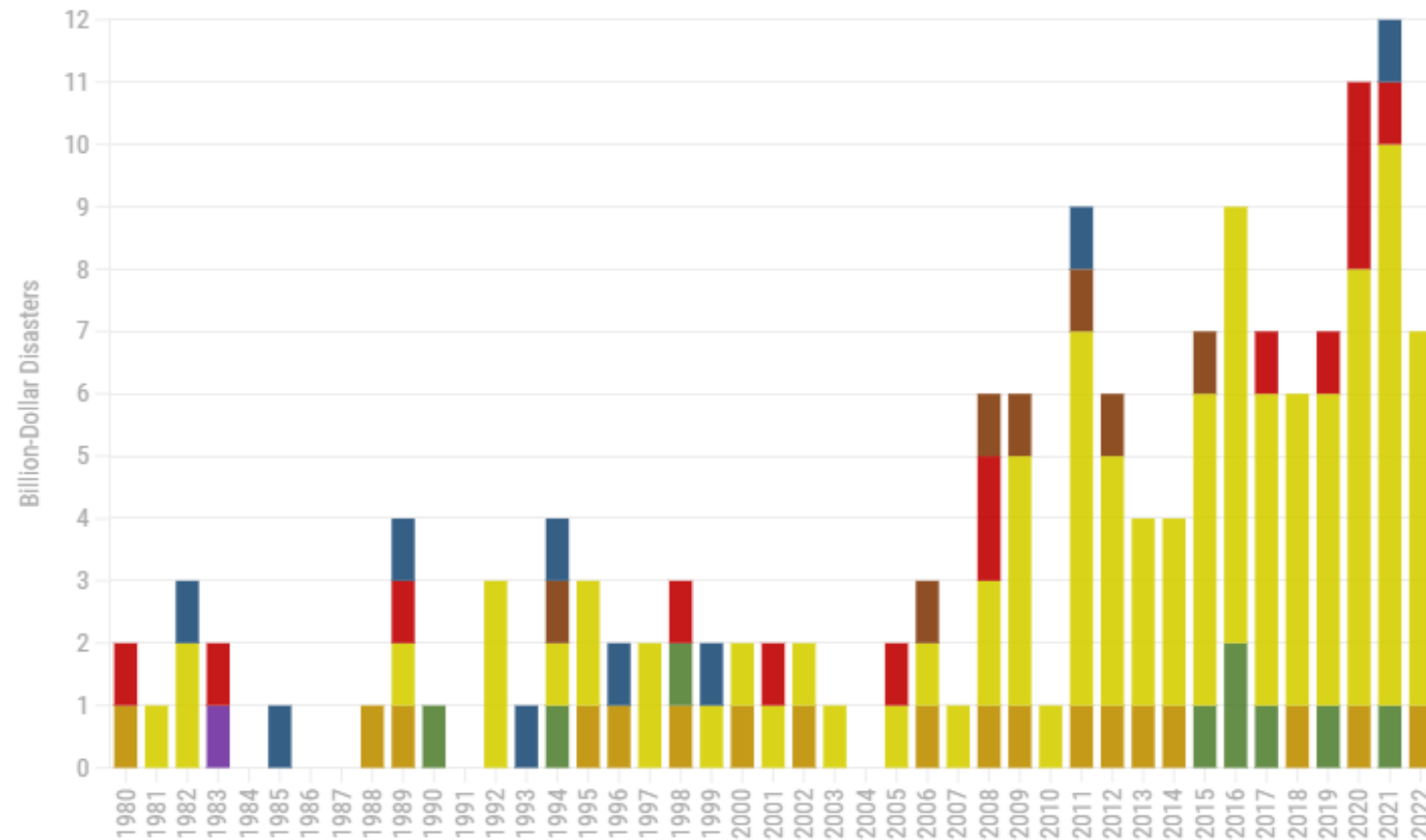


Texas is Disaster Prone

Number of Billion-Dollar Disasters

1980-2022 | Texas

■ Drought ■ Floods ■ Freezes ■ Severe Storms ■ Tropical Cyclones ■ Wildfires ■ Winter Storms



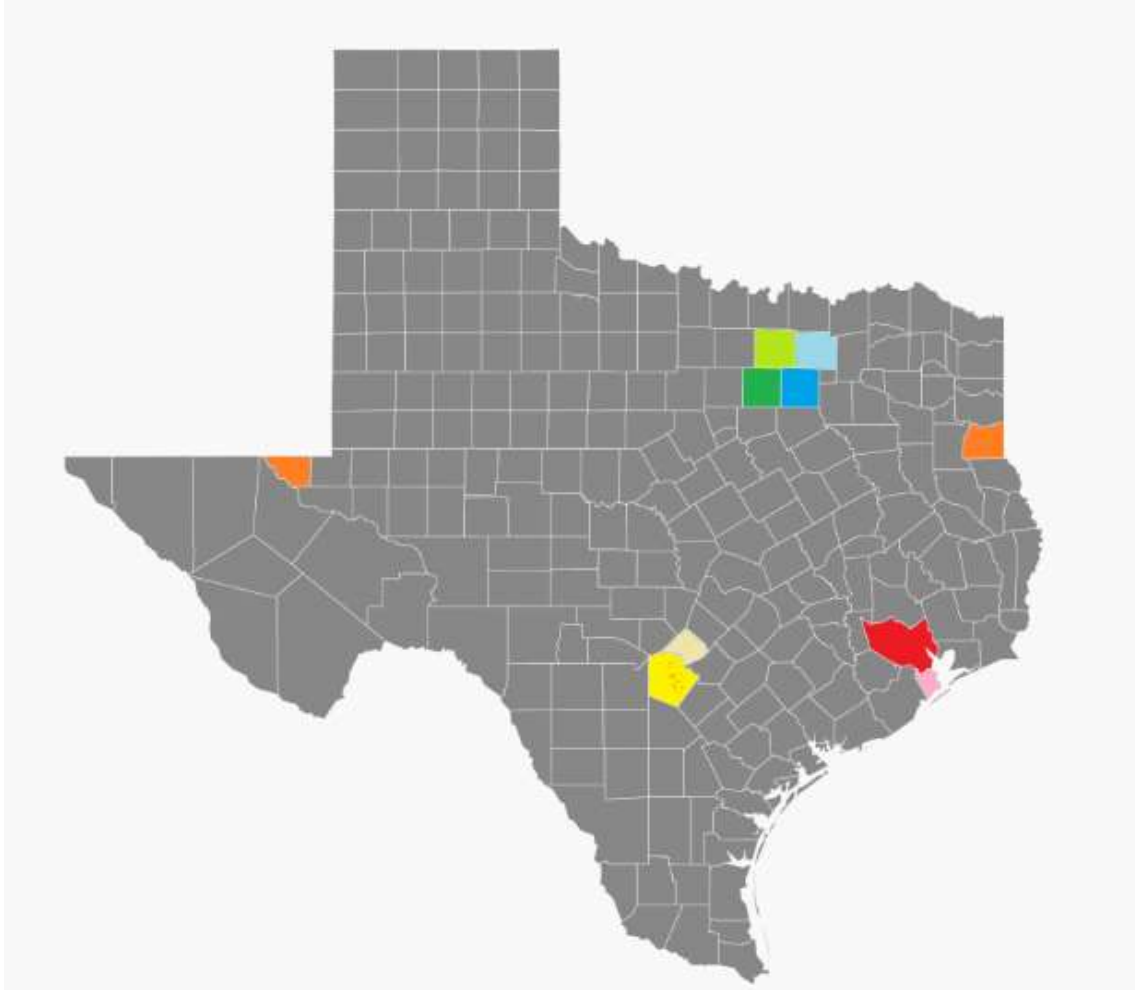
Source: NOAA National Centers for Environmental Information • Chart created by Christopher Adams, KXAN



Disaster Declaration Process



Disasters Driven by Dollars



Selected Disaster
Thresholds in Texas
Counties (2023):

State Threshold:
\$53,627,729.20

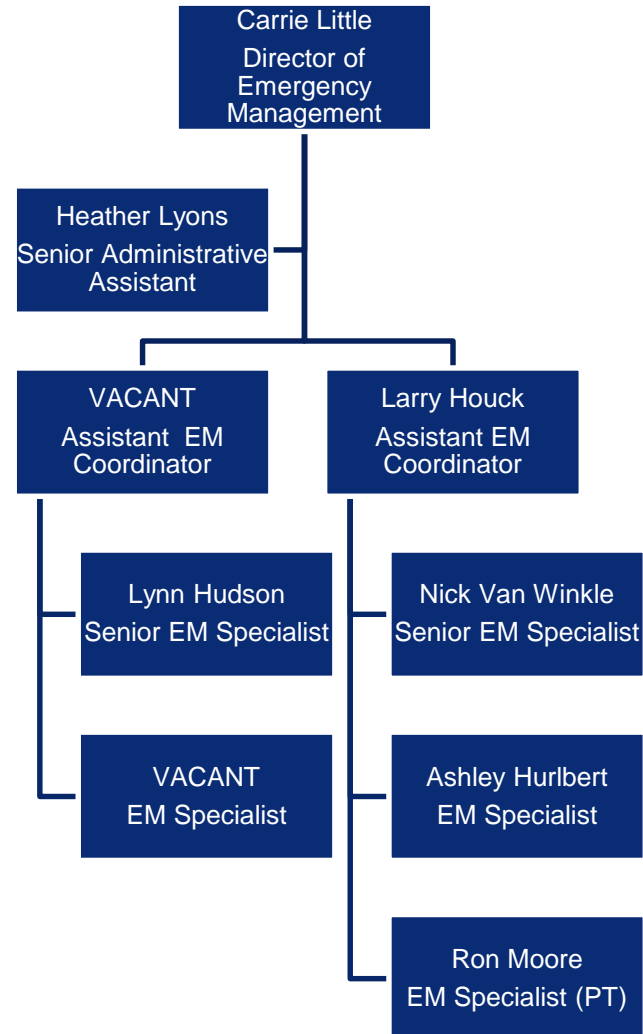
- **Bexar: \$ 9,242,890.20**
- **Collin: \$ 4,896,539.00**
- Comal: \$ 742,904.60
- **Dallas: \$ 12,022,279.40**
- **Denton \$ 4,169,541.20**
- Galveston: \$ 1,613,137.20
- **Harris: \$ 21,763,267.00**
- **Loving: \$ 294.40**
- **Tarrant: \$ 9,708,944.00**

Economic Recovery for Families

- Insurance = Preparedness
- FEMA will not make you whole
 - 2023 maximum FEMA Assistance to Individuals \$37,900 for housing assistance and \$37,900 for other needs assistance
- Uninsured or underinsured losses = “Franken-recovery”
 - Low interest loans
 - Non-profit groups
 - Faith based assistance



Emergency Management Organization



Four Phases of Emergency Management



Prevention and Mitigation



Preparedness



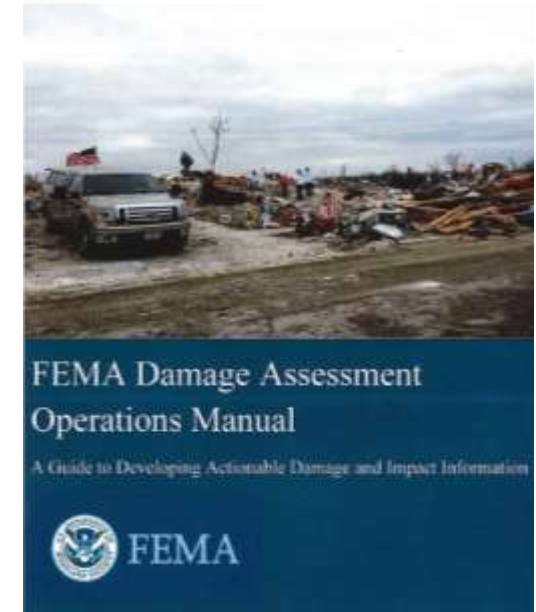
Response

- In the past, the City of Plano has responded to many emergencies and events of various sizes, including:
 - 2014 Ebola
 - 2016 Rowlett/ Garland Tornado
 - 2017 Hurricane Harvey
 - 2019-2022 COVID
 - 2020 Protests
 - 2021 Severe Winter Storm
 - 2022 Winter Storm



Recovery

- Recovery efforts are concerned with issues and decisions that must be made after immediate needs are addressed
- The City of Plano is committed to encouraging, facilitating and assisting recovery efforts if a disaster were to occur
 - Knowledge of Robert T. Stafford Disaster Relief Act (*Federal aid after disaster*)
 - Mutual Aid Agreements
 - Disaster Debris Management Plan



EOC Activation



EOC Activation and Responsibilities



Day to Day Responsibilities

- Grants Management
- Develop and Maintain Plans
 - Comprehensive Emergency Management Plan
 - Continuity of Operations Plan
 - Hazard Mitigation Action Plan
 - Disaster Debris Management Plan
 - Disaster Recovery and Redevelopment Plan
- Conducting Training and Exercises
- Local Community Education and Outreach



Comprehensive Emergency Management Plan

- Provides general guidance for emergency management activities by FUNCTION

Basic Plan

ESF #1- Transportation

ESF #2- Warning, Notification,
and Communications

ESF #3- Public Works and
Engineering

ESF #4- Firefighting

ESF #5- Emergency
Management

ESF #6- Shelter Mass Care and
Human Resources

ESF #7- Resource Management

ESF #8- Emergency Medical
Services

ESF #9- Search and Rescue

ESF #10- Hazardous Materials

ESF #12- Utilities

ESF #13- Law Enforcement

ESF #14- Recovery

ESF #15- Public Information

Support Annexes

Damage Assessment

Volunteer Management

Donations Management

Financial Management

Private Sector Coordination

Hazard Annexes

Public Health

Terrorism

Relationship Building

- City Departments
- Community Leaders
- School Districts
- Medical Community
- Business Partners
- Volunteer Groups
- Non-profit Agencies
- Faith Community
- Regional Partners
- State and Federal Agencies



Homeland Security Grants

- State Homeland Security Program
- Urban Area Security Initiative
 - Emergency Management
 - Public Safety Communications
 - Urban Search and Rescue
 - Hazardous Materials
 - Swift Water Rescue
 - Bomb Squad
 - SWAT Team
 - Crisis Negotiation Team/Intelligence

Grant Year	Award
2004	\$ 719,083.21
2005	\$ 481,997.39
2006	\$ 353,239.90
2007	\$ 272,850.00
2008	\$ 368,700.00
2009	\$ 239,098.41
2010	\$ 389,961.57
2011	\$ 298,700.00
2012	\$ 117,404.00
2013	\$ 149,147.80
2014	\$ 129,416.00
2015	\$ 145,402.28
2016	\$ 171,715.00
2017	\$ 233,095.00
2018	\$ 251,091.89
2019	\$ 308,008.90
2020	\$ 248,215.00
2021	\$ 212,523.00
2022	\$ 299,000.00
2023	\$ 179,105.00
Total	\$ 5,567,754.35





Siren 4-3-2-1

- 4 Reasons to Sound the Sirens
 - Winds in excess of 70 mph
 - Hail greater than 1.5 inches
 - Tornado warning issued/tornado spotted by TRAINED spotter
 - Other emergencies to seek shelter immediately
- 3 minutes of wailing once sirens activated
- 2 actions to take – seek shelter, seek information
- 1 emergency sounds ALL sirens



Plano City Call

- Mass Notification System
- Notifies Using
 - Phone
 - Text
 - Email



A black and white photograph of several water buffaloes in a rural setting. One buffalo is prominently featured in the foreground, facing left, with its long, curved horns clearly visible. Another buffalo is partially visible behind it, and a third is further back on the left. The ground is uneven and rocky, with some sparse vegetation. In the background, there are trees and a fence line. A dark blue rectangular box with rounded corners is overlaid on the center of the image, containing white text.

Individual and Family Preparedness

Know Your Hazards

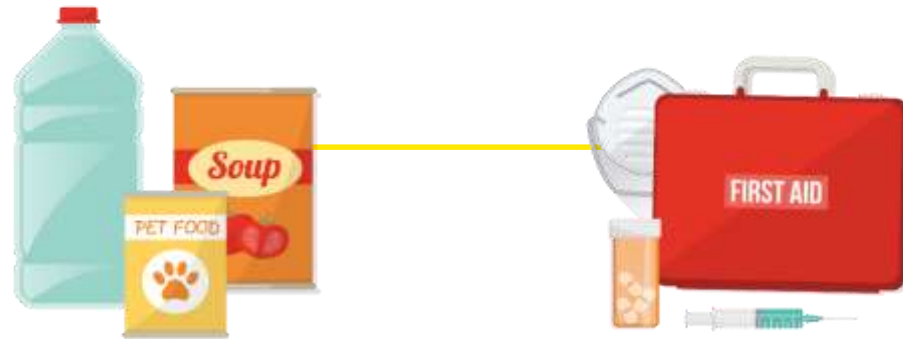
- Severe Weather
- Tornado
- Hazardous Materials
- Winter Weather
- Public Health Emergencies
- Flooding
- Hail
- Extreme Heat
- Active Shooter Events
- Terrorism
- Cyber Attack
- Civil Disorder
- Transportation Incident
- Expansive Soils
- Utility Disruption



Get Ready

- Build an Emergency Kit
 - Special Needs
 - Pets
- Create a Communication Plan
- Register for Local Alerts
- NOAA All Hazards Radio

GET READY



Get Involved

- Community Emergency Response Team
- Radio Amateur Civil Emergency Service
- Skywarn Storm Spotters
- Citizens Police Academy
- Citizens Fire Academy
- American Red Cross training



Resources

- Plano Emergency Management
plano.gov/emergencymanagement
- Texas Division of Emergency Management
tdem.texas.gov
- Federal Emergency Management Agency
fema.gov
- KnoWhat2Do
knowwhat2do.com





Follow us on social media!



Questions?

Contact Information

Department of Emergency Management

972-769-4824

dem@plano.gov

